

PER/USE



PIANO - XYLO

COAT RACK / Patrick Séha



PIANO - XYLO

The XYLO is a wall-mounted coat rack with foldable hooks, inspired by the PIANO hanger panel designed by Patrick Seha (B).

The name of the XYLO refers to a xylophone because of the similarity with the musical instrument, just like the hooks of the PIANO refer to the keys of a piano keyboard.

The flexible hooks can be opened or closed over the whole length of the XYLO. When not in use, all hooks can be closed, giving the XYLO an elegant look and space-saving features.

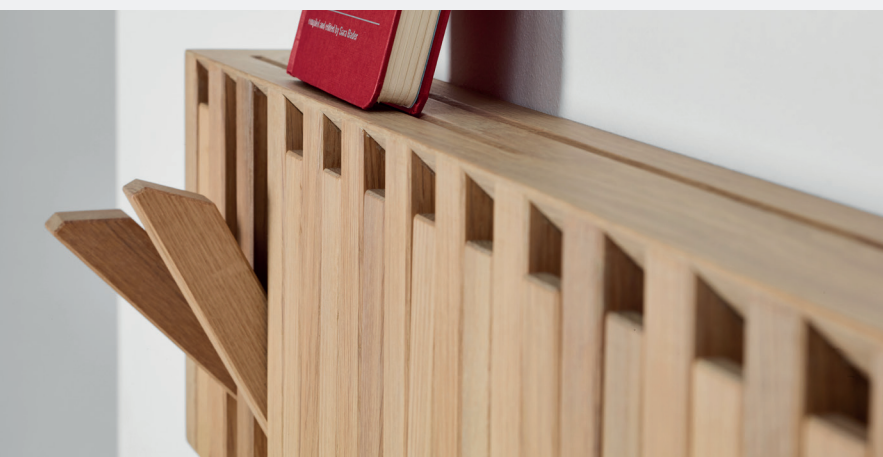
This makes the XYLO, as latest addition to the PIANO collection, a very functional, classic design piece, usable as a convenient rack to hang coats, shirts, towels, handbags or shoes, and fitting in any interior from a hall, living room, kitchen or bedroom, to bathrooms or pool houses.

The XYLO is entirely produced in Europe just like the PIANO from top grade FSC-labelled wood: solid oak, walnut or beech for indoor use, or teak for outdoor use.

The XYLO is distributed flatpack via our partners worldwide to keep the ecological footprint as low as possible.

Every hook of the XYLO can be opened to a 45° angle (maximum) all over the length of the coat rack. The XYLO has 15 hooks in total.

The XYLO is very easy to mount to the wall thanks to the separate mounting block (included in the box) to which the XYLO rack itself is clicked on. A clever system at the back side of the XYLO allows the user to adjust the movement of the hooks to open less or more smoothly as required.



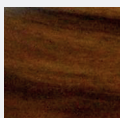
Dimensions (approx.)

| | (NET) | (PACKED) |
|--------|-------|----------|
| H (cm) | 18 | 25 |
| L (cm) | 81 | 90 |
| D (cm) | 7 | 15 |
| W (kg) | 12 | 15 |

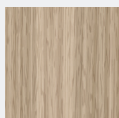
INDOOR



OAK
tainted black



WALNUT
natural oiled

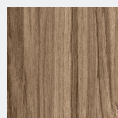


OAK
natural oiled



BEECH
lacquered
white

OUTDOOR



TEAK
natural oiled

FINISHES: Oak tainted black (RAL 9005), Walnut natural oiled, Oak natural oiled, Beech lacquered white (RAL 9010), Teak (natural oiled)

Actual colors can differ from sample. For further technical details and maintenance please refer to the user manual